



Grant High School

Issue No. 6

Thursday 10 May 2018



## KINDNESS WALL

Throughout Term 1, students and staff at GHS have been adding messages and notes of Kindness to a 'Kindness Wall' located in the WBC, to help spread Kindness throughout the school community. A special thank you to Mr Kurzman, Alix Schwarz, Ellie Harding and Zoe Simpson who used their tech skills to help put together the framed final piece.

**Renee Pluckhahan, Youth Worker**



## COMING EVENTS

**11 May**

- Interhouse Cross Country

**14 May**

- Governing Council 7:30pm

**15-17 May**

- NAPLAN

**17 May**

- SRC Casual Clothes Day

**18 May**

- Yr 8/9/Open Touch Football

**22 May**

- Yr 8/9 Boys Football

**21-23 May**

- Stage 1 Surf Camp A

**23-25 May**

- Stage 1 Surf Camp B & C

## IN THIS ISSUE

Around the School	1
NAPLAN	2
SAAASTA update	2
From the Principal	3
Photography	4-5
Around the school	6
Sport	7
Term 2 Calendar	8

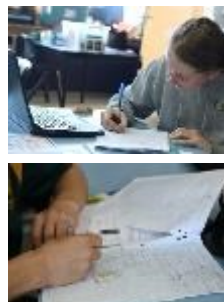
## HOMEWORK CLUB

Homework Club has been off to a great start so far this year, with on average at least 10-15 students attending every afternoon. Even with all of the disturbances of the new build everyone has been super positive with the space we have. A very helpful group of teachers from all learning areas have been also regularly coming in to make sure that these students are getting all the support that they need. With a large range of student abilities attending, we have also noticed a large number of senior students taking on mentoring roles within homework club, making sure that their younger peers get all the help they need.

While the students are working away, the Hub staff have been busily making sure that all of their stomachs are full of delicious and nutritious snacks. Toasted hot cross buns were a favourite last term around Easter and this term we are looking forward to some of Paula's amazing soups!

We love all of the learning and helping that was going on within Term 1 and we can't wait for more exciting times in Homework Club this term!

**Isabella Leane, Trainee**



## GRANT HIGH SCHOOL ABSENTEE LINE

**For all absentees**

**Phone 87263105**

Please leave your child's name, homegroup, your name and the reason for the absence. Thank you.

Hosking Avenue, Mt Gambier SA 5290  
PO Box 8221, Mt Gambier East 5291  
T 61 8 8726 3100  
F 61 8 8725 0173  
E dl.0928.info@schools.sa.edu.au  
W www.granths.sa.edu.au



Government of South Australia  
Department for Education

R E S P E C T

T R U S T

C O M M I T M E N T

# NAPLAN

NAPLAN tests the sorts of skills that are essential for every child to progress through school and life, such as reading, writing, spelling, grammar and numeracy. It is important to remember that NAPLAN is not about passing or failing, but about assessing learning progress. At the classroom level it is one of a number of important tools used by teachers to measure student progress. NAPLAN tests also provide schools, education authorities and governments with information about how education programs are working and whether young Australians are meeting important educational outcomes in literacy and numeracy

All students in Year 9 are expected to participate in the annual NAPLAN tests. Students with disability may qualify for adjustments that reflect the support normally provided for classroom assessments. Where applicable, you should first discuss the use of any disability adjustments for your child with your child's teacher.

A formal exemption may be granted for a student with significant intellectual disability and/or significant coexisting conditions, please contact your student's Community Leader to discuss this.

## SAASTA UPDATE

We were both proud and surprised to receive Regional Training Awards last term. For a program so new, it was extremely reassuring to have such positive feedback from the community and we greatly appreciate the support. Please also check out our first ever Power Cup Guernsey, designed by Kelsey Grigg, as well her explanation and the South East Academy Team Story. We look forward to sharing photos of our students representing the South East at the Power Cup!

## SAASTA– Guernsey Design Explanation

By Kelsey Grigg

The design on the following guernsey reflects our South East academy as the colours that have been used all represent the local landscape around the Limestone Coast. This design used red, yellow and black within the Wedge-tailed Eagle, as it links all students and families with their Aboriginal culture and reminds us that no matter where you are from in Australia that the Aboriginal family is one and will remain as one. The colour blue was used to represent communities coming together to gather water and to talk, as water is a big part of the Limestone Coast region as Mount Gambier has the popular Warwar (Blue Lake) and crater lakes, many rivers and creek systems and also is fairly close to the ocean. The green within the design represents the many forests, bushes and national parks that the Limestone Coast is home to.

The design of this guernsey was created with the help of local artist Belinda Bonney, as she came in to our Academy and talked with us about her art and how different patterns mean different things. We also had the privilege of Ngarrindjeri Elder Uncle Doug Nicholls and Boandik Elder Aunty Michelle Jaqueline-Furr coming in to talk with us about the history of this area and some land and cultural background information. Having this information made it easier to think of ideas and a meaning behind the design.

The team mascot is represented on the front of the jersey by the Wedge-tailed Eagle, as we are strong and bold. We are able to work as a team and we may not be the fastest team but we play smart, playing smart allows us to cover ground just like the eagle. The weaving on the Guernsey runs diagonally across the front and continues down the back and represents weaving as a cultural form of expression and function, which is very important to many cultural groups along the South East coast and over the border. The design pattern on the front and back represents our academy as there are students from different cultural groups and towns who have come together as one to form a strong team and the footprints express how we travel together and help and support each other to get the best for our team. I think it is important that we realise that even though we are from different cultural groups and communities that we are one family that will stick together and understand that we are the next generation of Aboriginal and Torres Strait Islander people, that it is our job to help and teach the next generation



### The Big Picture and Why We Need to Do Things Differently

Over the past two years we have agreed that our goal as a school community is to create future-ready citizens who have the capabilities they need to realise their *first life choices* when they leave Grant High School. In line with this, we wish to measure student success against the individual goals they and their families have developed for them, rather than against arbitrary, system-focused data.

To enable a more personalised approach to learning, we intend to create a timetable where there is space for students to work on identifying and reaching their goals, with the help and support of a Community that knows them very well. We are also aiming to foster a more focused environment where students can achieve at the highest level of which they are capable in their areas of particular talent.

### Communities

We have changed our structures to support this happening: Community Leaders and Managers will work with students and their families over an extended period of time to make good decisions about that young person's education choices and opportunities. These decisions will be based on sound data and a clear knowledge of the young person and their strengths, passions and current limitations. Community Leaders and Managers will also have influence over whole school decision-making, in collaboration with staff, students and families, to ensure the best and most appropriate opportunities are provided in line with students' plans and aspirations.

### Six-line Timetable in 2019

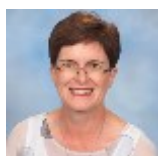
Our timetable needs to provide structured time for students to plan for their futures and how they are going to achieve their goals, which will be achieved through a longer weekly homegroup. The timetable also needs to provide increased uninterrupted learning time, so young people can more easily maintain their focus on their learning and consolidate their skills. In addition, in a society where we are overwhelmed by choice, spending more time on fewer subjects should allow for more effective and deeper learning and, therefore, better results as well as improved concentration spans.

### Teaching and Learning

A simpler and more open timetable will allow for an increased number of integrated learning options, where the focus can be on students' skill and capability development through topics of their own choice, guided by groups of expert teachers. This STEM-focused approach will be augmented by the new facilities currently being built. Members of our staff are working with industry to understand those skills and capabilities that will be most useful to our young people in the world outside school, so that we can be sure that we are providing the opportunity for students to access the most relevant education possible.

### Support

We will continue to support students with appropriate interventions when they are experiencing difficulties, to ensure they can manage classes geared towards their chronological age or higher. We will also help young people identify where they can be accelerated to ensure their learning is always challenging and engaging. Homework Club operates to support students with their learning outside of school time, and the Hub will continue to support students work towards goals of independence, while keeping a close eye on wellbeing – physical and emotional. Students who experience significant barriers to their education will have access to outstanding Intervention and Support and Flexible Learning Options programs, as well as wellbeing support from very well-trained staff.



Fleur Roachock, Principal



# YR 9 PHOTOGRAPHY



AMBER CHRISTY



VIOLET WEBBER



GEORGIA O'DONNELL



KAYLA SHEPHERD



RACHAEL KELLY



WIL SCANLON



TAHLIA FRENCHAM



GEORGIA O'DONNELL



REBEKAH BROWN



# YR 9 PHOTOGRAPHY



HANNAH SPENCER CAITLIN CLEMENTS



CAITLIN LETIZIA



CLAIRE REDDING



CAITLIN LETIZIA



KAITLIN PEBERDY



GEMMA BOX





HERE TO HELP YOU WITH ANY  
OF YOUR EDUCATION NEEDS

SNACKS PROVIDED!

## Homework Club

8:00 am to 8:45 am (Monday to Friday)  
3:40 pm to 5:00 pm (Monday to Thursday)

GRANT HIGH SCHOOL  
ATTENTION PARENTS OF YEAR 8  
STUDENTS 2019

**EXPO EVENING**  
Wednesday · May 30 · 6.30 - 8.00pm  
**YEAR 7 PARENT TOURS**  
Tuesday · May 29 · 5.00pm  
Wednesday · May 30 · 2.00pm

## NARACOORTE CAVES

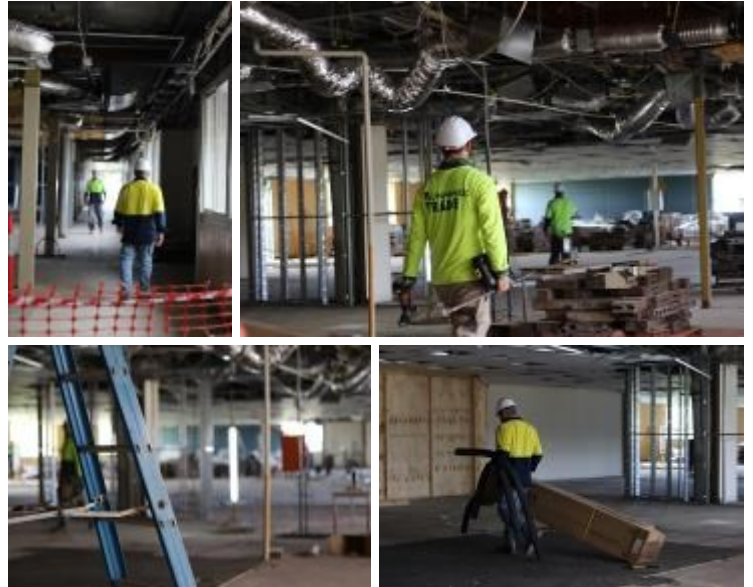
On the 10th of April two amazingly well behaved classes, Mr Zadow's and Mrs Dowling's Year 8 Science classes, accompanied by Tracy and Bella, travelled to the Naracoorte Caves for a day full of adventure. The classes were split into groups, each accompanied by a different staff member, with some travelling into the caves to try fun challenges and learn about how the caves were, while the others were in the Wonambi Fossil centre learning about what sort of animals used to live in the caves and what the environment was like.

Overall, it was a great experience for all of the students and staff members.



## THE STEM BUILD

The excitement around the STEM build has been growing throughout the school over the last few months, with the builders being hard at work since mid-February. We can't wait to see how it looks when it's done!



## SCIENCE



R E S P E C T

T R U S T

C O M M I T M E N T



# ADELAIDE ATHLETICS

Last term 41 students took part in the Adelaide Athletics competition. Conditions were hot, and all students who participated did so in an excellent manner, representing the school well. With over 40 students finishing in the top three for their event we completed the day in equal first position with 649 points. There were many standout performers on the day including Shylah Fosdike, who came first in both the Open Girls 100 and 200m races. Wade Blatchford also dominated in his field, finishing first in both the Open Boys Triple and Long Jump events. Wade also achieved a personal best, in the triple jump with an impressive 12.97m jump! Melody Battye-Whitwell also finished first in her triple jump event with an outstanding 9.80m leap. All team members did an excellent job, and filled gaps as they appeared. The students should be commended on their efforts, particularly in the hot conditions on the day. This victory means we will move into the B2 division next year. A fantastic effort by all involved.



## PEDAL PRIX



SUBSTANCE MISUSE LIMESTONE COAST PRESENTS

## THE ICE UPDATE

A COMMUNITY INFORMATION FORUM SPONSORED BY  
THE ROTARY CLUBS OF MOUNT GAMBIER WEST, MOUNT GAMBIER AND BORDERTOWN

**We want to tell you the latest information on  
'Ice' and how our local community is responding**

Please join the South Australia Police and a  
panel of experts at this free community forum

**7 PM - May 21st 2018**  
**Sir Robert Helpmann Theatre**  
**10 Watson Tce, Mount Gambier**  
**FREE EVENT**

No bookings necessary. For more information contact:  
Limestone Coast Police Crime Prevention Section - 8735 1047  
or Substance Misuse Limestone Coast - 8721 2406

This forum is supported by:



R E S P E C T

T R U S T

C O M M I T M E N T

# CALENDAR

	MONDAY	TUESDAY	WEDNESDAY	THURSDAY	FRIDAY
<u>WEEK 1</u>  <b>April/May</b>	30	1	2	3  South East Cattle Handlers Course	4
<u>WEEK 2</u>  <b>May</b>	7  <b>Parent Teacher Interviews</b>	8  ICAS Digital Tech Comp Wellbeing Committee KO Open Boys Football	9  RAP Presentation 8.50am	10  <b>Newsletter</b>	11  Interhouse Cross Country
<u>WEEK 3</u>  <b>May</b>  -  -	14  <b>Governing Council</b> 7.30pm  Open Girls Football	15	16	17  <b>SRC Casual Clothes Day</b>	18  Year 8/9 & Open Touch Football
	Legal Studies Camp				
		NAPLAN			
<u>WEEK 4</u>  <b>May</b>  -  -	21	22  Yr 8/9 Boys Football	23	24  <b>Newsletter</b>  Yr 8/9 Girls 9-a-side Football	25  Year 10 Street Foods  Stage 1 & 2 Integrated Learning Curiosity Expo 2.00 pm Gym
	Stage 1 Surf Camp A			Stage 1 Surf Camp Class B & C	
<u>WEEK 5</u>  <b>May/June</b>	28  3.30 -5.00pm World Challenge Launch Meeting.	29  Year 8 / 9 Cyber Safety Presentation Cyberia  Yr 8 9.30 am Year 9 11.40 am  Year 7 Parent Tour 5.00pm  ICAS Science Comp	30  Year 7 Parent Tours 2.00pm  Year 8 Expo 6.30 – 8.00pm  Interschool Cross Country	31  Yr 8/9 Boys 9-a-side Football  Yr 8/9 Touch Football	1  Open Touch Football
	National Reconciliation Week				
<u>WEEK 6</u>  <b>June</b>  -  -	4	5	6  Men B second dose	7  <b>Newsletter</b>  Yr 8 Activity Afternoon 6/7	8
	Aboriginal Power Cup				
	Year 10 Work Experience				
<u>WEEK 7</u>  <b>June</b>	11  <b>QUEEN'S BIRTHDAY HOLIDAY</b>	12	13	14  ICAS Writing Comp	15  GHS Gig Night
<u>WEEK 8</u>  <b>June</b>  -	18	19	20  School Social	21  <b>Newsletter</b>	22  Science & Engineering challenge
	Year 11 Exams				
<u>WEEK 9</u>  <b>June</b>  -	25  <b>Governing Council</b> 7.30pm	26  Yr 8/9 & Open Girls Soccer v TWC @ GHS	27	28	29  <b>Student Free Day</b>
	Year 12 Exams				
<u>WEEK 10</u>  <b>July</b>	2	3	4  Celebration	5  <b>Newsletter</b>	6  2.20 Dismissal Page 8
	SAASTA Cert III Sport & Rec – TAFESA Regency				

R E S P E C T

T R U S T

C O M M I T M E N T